

Model: JSMA-PIH75A7KB

No.	Item	Symbol	Unit	Specification	No.	Item	Symbol	Unit	Specification
1	Drive	-	-	3 φ 220 VAC	13	Rotor Inertia	Jm	kg·cm ²	110.88±10%
2	Cooling Method	-	-	Totally Enclosed	14	Rated Power Rate	Q-R	Kw/s	206.06
3	Exciting Method	-	-	Permanent Magnet	15	Resistance	Ra	Ω	0.1±10%/2 φ
4	Resolution	-	-	17 bit INC	16	Inductance	L	mH	2.5±10%/2 φ
5	Rated Output	P-R	W	7500	17	Mech. Time Constant	Tm	ms	0.99±10%
6	Rated Torque	T-R	N·m	47.8	18	Elect. Time Constant	Te	ms	25±10%
7	Max. Torque	T-max	N·m	122.6	19	Insulation Class	-	-	Class F
8	Rated Speed	N-R	rpm	1500	20	Operation Temp.	T	°C	0-40
9	Rated Current	I-R	A	38.6	21	Operation Humd.	RH	%	<80
10	Max. Current	I-max	A	99.1	22	Storage Temp.	T	°C	-20°~60°
11	Torque Constant	Kt	N·m/A	1.24±10%	23	Storage Humd.	RH	%	<80
12	Voltage Constant	Ke	V/krpm	82.3±10% / 2 φ	24	Weight	W	kgw	39

PIN	Signal
B	+5V
I	0V
A	
C	
H	SD+
D	SD-
G	
E	
F	FG

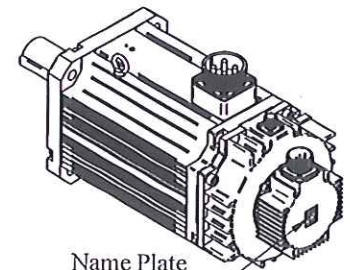
Encoder Wiring

PIN	Signal
A	U
B	V
C	W
D	FG

Motor Wiring

PIN	Signal
A	0
B	24V
C	

Brake Wiring



Name Plate for Notice

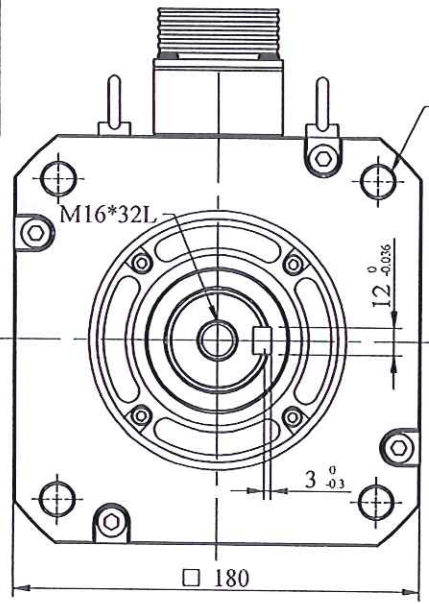
AC SERVO MOTOR

Model: JSMA-PIH75A7KB
 Pr. 7.5 KW ; Nr. 1500 rpm
 Ir. 38.6 A , Tr. 47.8 N·m
 NO.
TECO ELECTRIC & MACHINERY CO., LTD.
 MADE IN TAIWAN

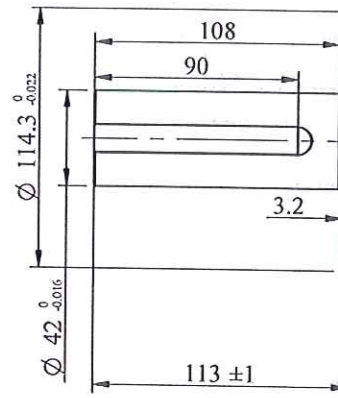
Name Plate for Spec



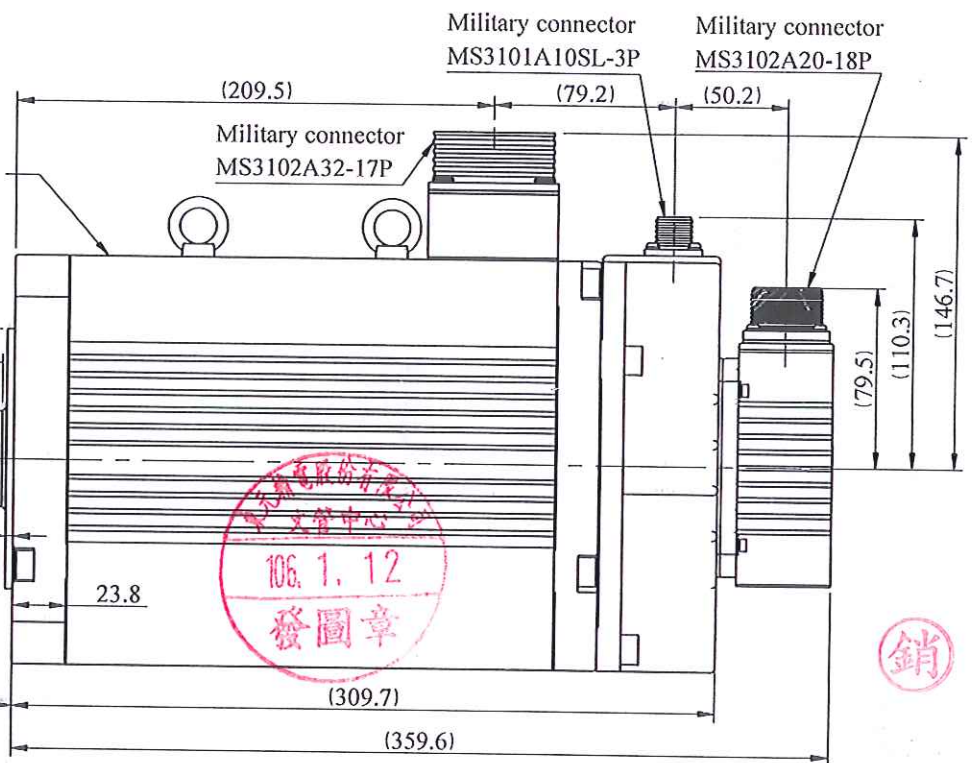
Name Plate for Notice



4-Ø13.5
P.C.D.Ø200±0.1



Name Plate for Spec



Note:
 Motor to be IP67.
 (excluding the shaft opening & connectors).

STANDARD TOLERANCE		APVD	SCALE	UNIT	mm	NAME	Servo Motor Outline Drawing		
X	±0.5	Michelle	3RD .A.P	UNIT	mm	TITLE	JSMA-PIH75A7KB		
.X	±0.2	Chase					Dept.	DWG.NO.	D01B18752H3B7AD01
.XX	±0.05								
ANGLE	±30'								
MATERIAL		REVISION	DESCRIPTION	SIGNATURE	DATE	TECO ELECTRO DEVICES CO., LTD.			

